

## A3000 Video Analytic Application Server

(Linux based Video Analytics plugin server)

### Automatic Number Plate Recognition



#### Benefits Summary:

- Technically designed for Access Control
- Compatible with Xtralis Security solutions portfolio
- Xtralis quality and reliability
- Easy installation & configuration
- Possibility to avoid badge and badge reader management costs for vehicle entry
- Faster access for 'allowed' vehicles

© Xtralis AG. All rights reserved.

FIRE  
DETECTION

VIDEO  
SURVEILLANCE

ACCESS  
CONTROL

INTRUSION  
DETECTION

TRAFFIC  
MANAGEMENT

COMMAND  
& CONTROL  
SOFTWARE

## A3000 Video Analytic Application Server

(Linux based Video Analytics plugin server)

### Automatic Number Plate Recognition



## M3000 v3.1.14 Release :

### -Support for A3000 ANPR

*This interface into M3000 allows A3000 unit to retrieve cardholders having numberplate(s) defined. A maximum of 2 plates per cardholder can be defined. M3000 will also allow search on numberplate field in history.*



© Xtralis AG. All rights reserved.

FIRE  
DETECTION

VIDEO  
SURVEILLANCE

ACCESS  
CONTROL

INTRUSION  
DETECTION

TRAFFIC  
MANAGEMENT

COMMAND  
& CONTROL  
SOFTWARE

## A3000 Video Analytic Application Server

(Linux based Video Analytics plugin server)

### Automatic Number Plate Recognition



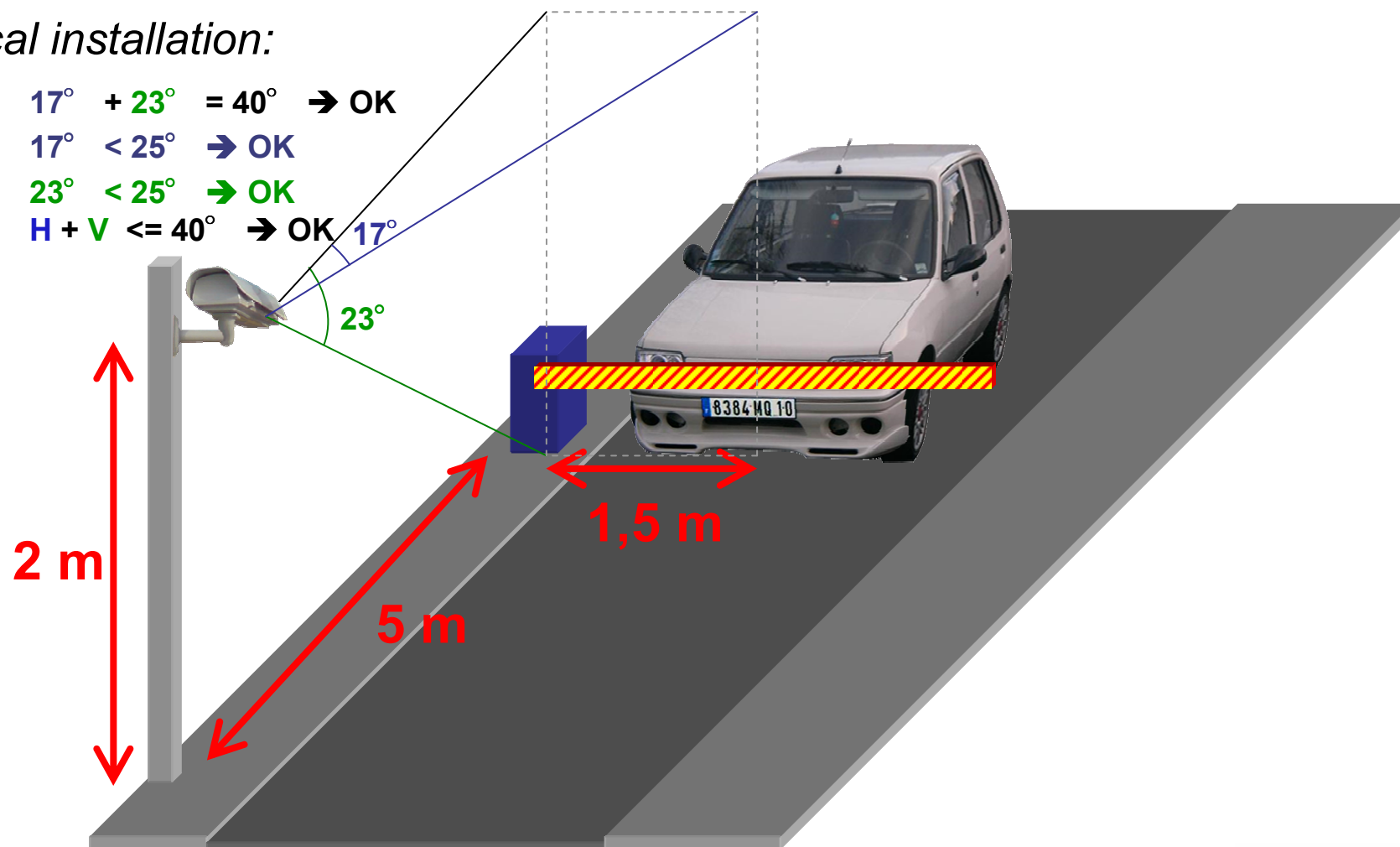
*Typical installation:*

$17^\circ + 23^\circ = 40^\circ \rightarrow \text{OK}$

$17^\circ < 25^\circ \rightarrow \text{OK}$

$23^\circ < 25^\circ \rightarrow \text{OK}$

$H + V \leq 40^\circ \rightarrow \text{OK}$



© Xtralis AG. All rights reserved.

FIRE  
DETECTION

VIDEO  
SURVEILLANCE

ACCESS  
CONTROL

INTRUSION  
DETECTION

TRAFFIC  
MANAGEMENT

COMMAND  
& CONTROL  
SOFTWARE

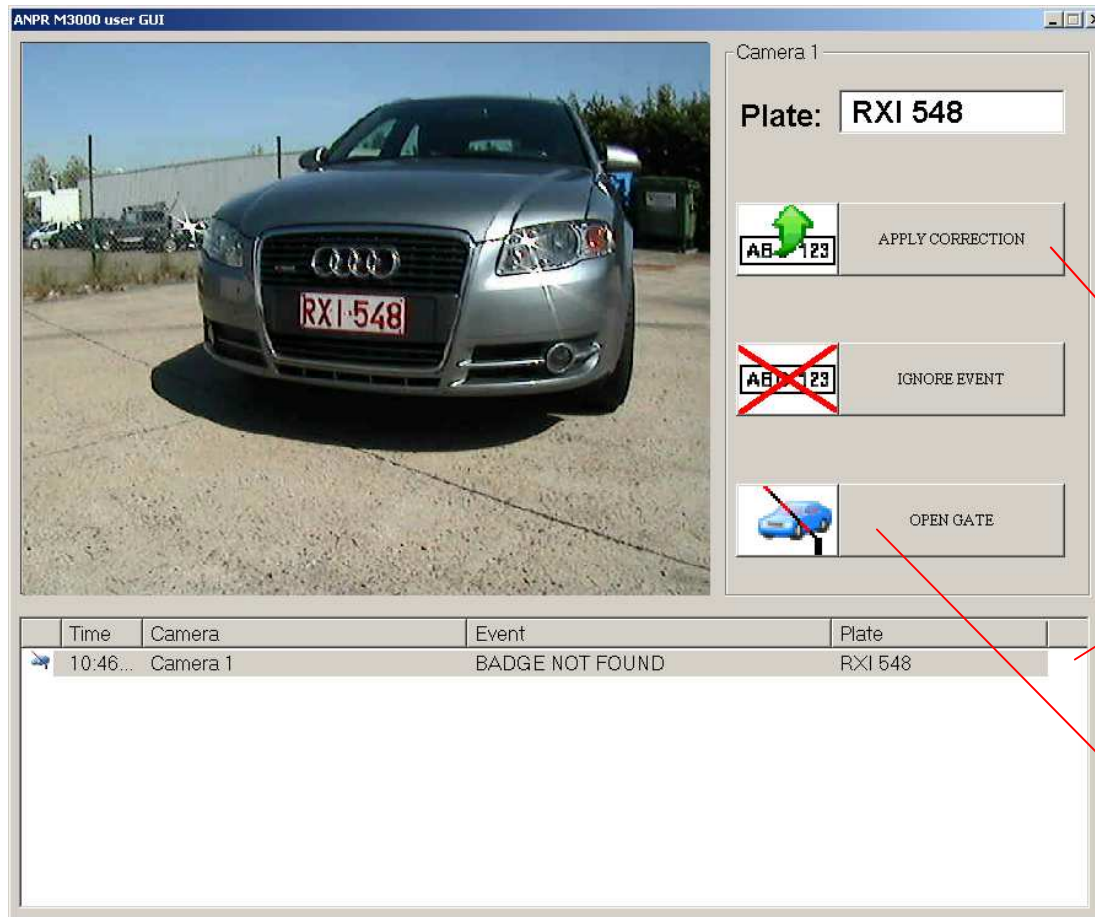
## A3000 Video Analytic Application Server

(Linux based Video Analytics plugin server)

### Automatic Number Plate Recognition



### ANPR M3000 user GUI = Client (auto pop-up) GUI for manual interaction at reception



- ANPR system verifies if number plate is known within DB of system M3000 DB.

- If numberplate not found an operator can be asked to verify the plate and correct it.

- Also a manual opening of the gate can be achieved (Master Key Badge)

© Xtralis AG. All rights reserved.

FIRE  
DETECTION

VIDEO  
SURVEILLANCE

ACCESS  
CONTROL

INTRUSION  
DETECTION

TRAFFIC  
MANAGEMENT

COMMAND  
& CONTROL  
SOFTWARE



# **A3000 Video Analytic Application Server** (Linux based Video Analytics plugin server) **Automatic Number Plate Recognition**



## **A3000 - S3000:RDCU Configuration:**

The screenshot shows the 'ANPR-M3000 Configuration' window with the 'S3000/S3100 Interface' tab selected. The 'Type' is set to 'S3000:RDCU'. The 'RDCU Interface Settings' section includes the following fields:

- RDCU IP Address: 10.1.3.50
- (TCP) Port: 8000
- Password: [REDACTED]
- RDCU Channel: 1
- Master Key Badge: 12345678

A red arrow points from the 'Master Key Badge' field to the label 'Master Key Badge' below the screenshots.

## **A3000 - S3100 Configuration:**

The screenshot shows the 'ANPR-M3000 Configuration' window with the 'S3000/S3100 Interface' tab selected. The 'Type' is set to 'S3100'. The 'S3100 Interface Settings' section includes the following fields:

- S3100 IP Address: 10.12.123.213
- (UDP) Port: 7000
- Door: 3
- Head: A
- Master Key Badge: 80968

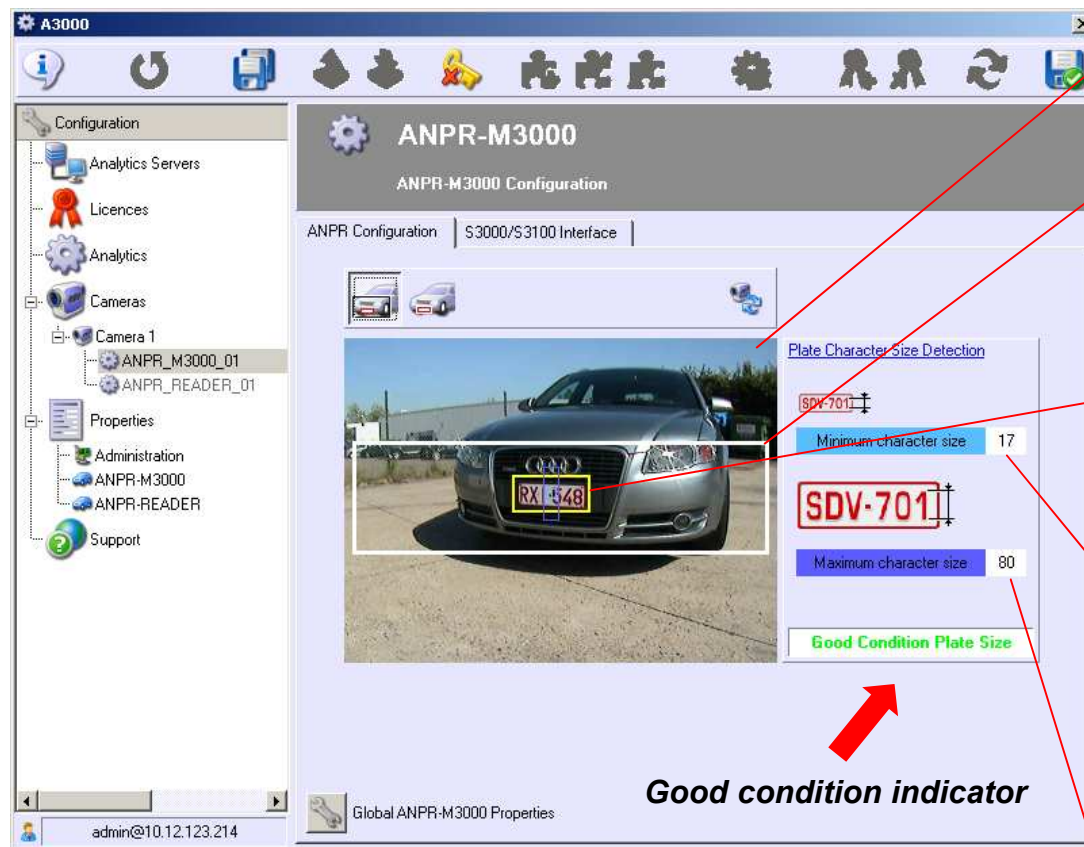
A red arrow points from the 'Master Key Badge' field to the label 'Master Key Badge' below the screenshots.

**Master Key Badge**

# A3000 Video Analytic Application Server

(Linux based Video Analytics plugin server)

## Automatic Number Plate Recognition



- FOV = Field of view :  
Full camera image

- ROI = Region of interest:  
Area in the camera image where the number plate will appear while approaching the ANPR system.

- LPA = License plate area:  
Determines the size of the number plate within the ROI. **Remark : LPA = Test area for configuration = no parameter!!!**

- Min. character size = 17 pixels:  
Minimum number of pixels (character height) to be able for the analytics algorithm to recognize alfa-numerical characters.  
Ex : Facial recognition = 330 pixels/meter  
License plate recogn. = 150 pixels/meter  
Visual identification = 100 pixels/meter

- Max. character size = 80 pixels:

© Xtralis AG. All rights reserved.

FIRE  
DETECTION

VIDEO  
SURVEILLANCE

ACCESS  
CONTROL

INTRUSION  
DETECTION

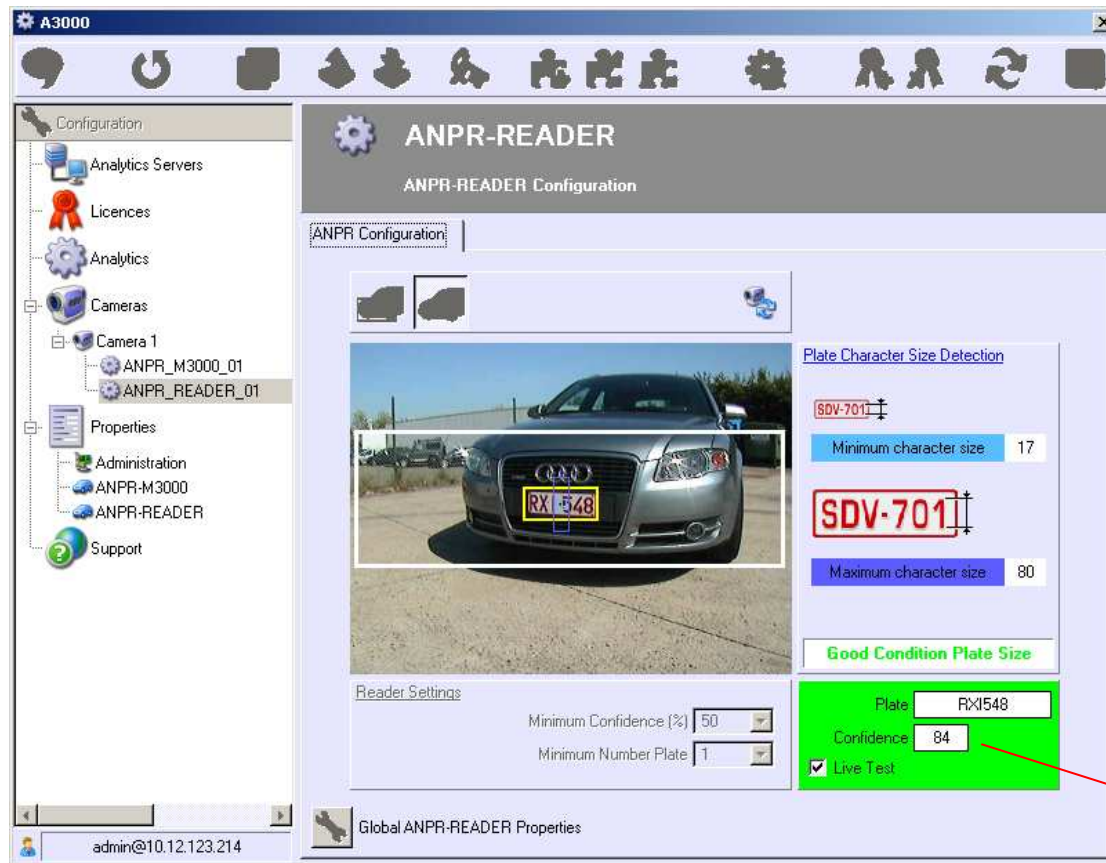
TRAFFIC  
MANAGEMENT

COMMAND  
& CONTROL  
SOFTWARE

## A3000 Video Analytic Application Server

(Linux based Video Analytics plugin server)

### Automatic Number Plate Recognition



**- Live test available:**

***If good condition indication is ok,  
a live test will result in a reliability  
indicator.***

***Reliability indicator should be  $\geq 70\%$***

© Xtralis AG. All rights reserved.

**FIRE  
DETECTION**

**VIDEO  
SURVEILLANCE**

**ACCESS  
CONTROL**

**INTRUSION  
DETECTION**

**TRAFFIC  
MANAGEMENT**

**COMMAND  
& CONTROL  
SOFTWARE**

## A3000 Video Analytic Application Server

(Linux based Video Analytics plugin server)

### Automatic Number Plate Recognition



- *FXCAM is an advanced camera technology dedicated for 24/7 number plate capturing.*
- *The camera is equipped with an infra-red illuminator built-in to the camera housing.*
- *Although the flash light power (light emission) is 2000 W, due to the synchronizing unit the power consumption is only 20W.*
- *Fixed factory settings make the installation and startup process easy and quick.*
- *The smart shutter technology enables you to make an adaptive image capturing system, controlled automatically by software.*

© Xtralis AG. All rights reserved.

FIRE  
DETECTION

VIDEO  
SURVEILLANCE

ACCESS  
CONTROL

INTRUSION  
DETECTION

TRAFFIC  
MANAGEMENT

COMMAND  
& CONTROL  
SOFTWARE